

# GARMIN®

## Transducer Selection Guide



# echoMAP™ UHD 65/75CV

### Traditional Sonar

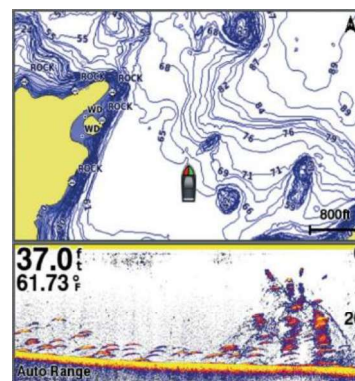
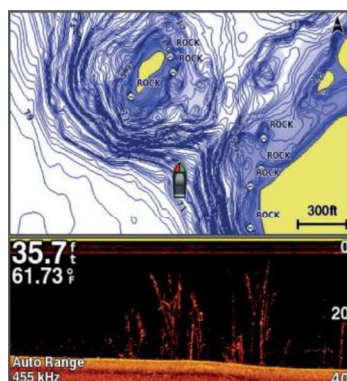


Type	Description	Part Number	RRP (inc. VAT)
Transom	Plastic Dual Frequency (50/200khz)	010-10272-10	£59.99
Transom	Traditional Hide Wide CHIRP (150/240khz - GT8HW TM)	010-12401-00	£119.99
Transom	Plastic Transom Mount Mid-CHIRP (80-160khz - GT15M-TM)	010-12402-10	£269.99
In Hull	Plastic in-hull (50/200khz - P79)	010-10327-20	£179.99
In Hull	Traditional Hide Wide CHIRP (150/240khz - GT8HW IH)	010-12401-10	£139.99
In Hull	Plastic in-hull Mid-CHIRP (80-160khz - GT15M-IH)	010-12402-00	£169.99
Through Hull	Bronze Thru-hull (50/200khz - B117)	010-10182-21	£229.99
Through Hull	Plastic Thru-hull (50/200khz - P319)	010-10194-21	£139.99
Through Hull	Bronze Thru-hull Mid-CHIRP (80-160khz GT15M-TH)	010-12402-20	£359.99

### ClearVu & Traditional Sonar



Type	Description	Part Number	RRP (inc. VAT)
Transom	Inshore <sup>1</sup> (100m<) 77/200khz, CV455/800khz - GT20TM	010-01960-01	£129.99
Transom	Inshore <sup>1</sup> (100m<) Traditional High Wide CHIRP (150/240khz and CV 455/800khz - GT22HW TM)	010-12403-00	£149.99
Transom	Offshore <sup>1</sup> (>100m) Traditional Mid-band CHIRP (80-160khz and CV 260/455khz - GT23M TM)	010-12404-00	£269.99
Transom UHD	GT24UHD-TM Ultra High-Definition Scanning Sonar (Traditional CHIRP High Wide - 150-240 kHz; UHD ClearVu CHIRP 800 kHz - 760-880 kHz)	010-12908-00	£219.99
Through Hull	Traditional Mid-band CHIRP (80-160khz and CV 260/455khz - GT23MTH)	010-12404-10	£699.99



<sup>1</sup> Max depth can be affected by salinity, temperature and sea bed.